

From a world leader in point-of-care ultrasound comes the 180PLUS: digital, cost-effective ultrasound to help you practice more efficiently.

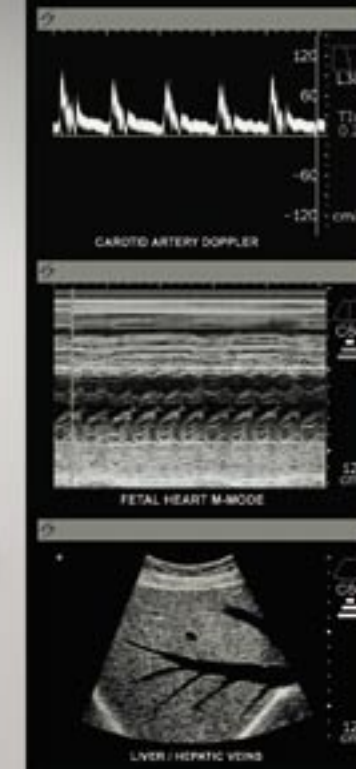
### 180PLUS

- High-quality ultrasound for comprehensive point-of-care imaging
- Compact and lightweight for unsurpassed portability – office, clinic, bedside exams
- 2D directional color (DCPD), color power Doppler and continuous wave Doppler
- Intuitive design allows the user to focus on the patient, not the technology
- All-digital image processing for consistent performance
- ECG and M-mode, plus measurement tools, analysis software and report packages
- Fast boot up – ready to scan in under 10 seconds
- Battery or AC powered
- A flexible solution for a wide range of diagnostic and interventional ultrasound applications
- Education and training programs available



## SONOSITE® 180PLUS





# The SonoSite 180PLUS — ultrasound at the point of care

## Pulsed Wave Doppler

Provides a sensitive and accurate quantitative assessment of blood flow, enabling the user to measure velocities and identify flow characteristics in arteries and veins. Doppler signals are exceptionally clean enhancing diagnostic confidence for vascular exams.

*"SonoSite's portable duplex ultrasound, the 180, is convenient to use, reliable, and cost-effective. It has helped me reach a new level of sophistication in my evaluation of venous disease."*

Vascular Surgery

## Color Power Doppler

For quickly detecting blood flow in vessels, or for guiding the placement of a pulsed Doppler sample volume, color power Doppler is a very sensitive mode that is less angle-dependent than velocity-based color flow. Directional color power Doppler is also available on selected transducers.

*"The images on the system are excellent and the advantages of affordable power Doppler are significant."*

Emergency Medicine

## Tissue Harmonic Imaging

THI is an advanced technology never before available in this price range. In THI mode, the system processes echoes at the higher harmonic frequencies, resulting in images with reduced noise and clutter artifacts. This enhances image quality with finer dot size and improved tissue differentiation.

*"We performed a F.A.S.T. exam on a very large man who fell 20' that was being air evacuated. We were able, with THI, to exclude significant internal bleeding and clear him for transport."*

Radiology

## PC Direct Connectivity

Offers a complete solution for digital documentation and image management on a standard PC. SiteLink image manager software downloads and automatically stores high-resolution images to an intuitive file system. Images can then be archived, reviewed and converted to other formats for use in QA programs and teaching, presentations, publications and for sharing with colleagues. DICOM and PACS interface solutions available.

*"The ability to save image information and transfer to PC creates an easy environment to discuss the images with other physicians."*

Radiology

## Transducers

SonoSite offers a selection of comfortable, lightweight, broadband transducers. Together with the 180PLUS these transducers allow you to perform a broad array of diagnostic studies and interventional procedures, including abdominal, vascular, breast, obstetrical, gynecological, pediatric/neonatal, cardiac, prostate, small parts, musculoskeletal and intraoperative.

*"It's simple to change from one transducer to another and the image quality is astonishing."*

Obstetrics/Gynecology

## SYSTEM SPECIFICATIONS



### Clinical Applications

- Abdominal
- Vascular
- Breast
- Obstetrical
- Pediatric/Neonatal
- Intraoperative Procedures
- Interventional Procedures
- Cardiac
- Small Parts
- Gynecological
- Musculoskeletal

### Physical Characteristics

- Height: 13.3" (33.8 cm)
- Width: 7.6" (19.3 cm)
- Depth: 2.5" (6.35 cm)
- Weight: 5.7 lb. (2.6 kg) with one transducer attached

### Imaging Modes

- 2D
- Zoom
- Narrow imaging sector
- Color power Doppler
- Pulsed wave Doppler (option)
- Directional color power Doppler
- Continuous wave Doppler (option)
- M-mode
- Tissue Harmonic Imaging (option)

### Transducers

- Lightweight with rapid, pinless connection
- C60/5-2: 60-mm broadband (5-2 MHz) curved array for general-purpose abdominal, obstetric and gynecologic applications
- ICT/7-4: 11-mm broadband (7-4 MHz) intracavitary array for obstetric gynecologic applications. Biopsy guide available.
- C15/4-2: 15-mm broadband (4-2 MHz) array for transthoracic and abdominal imaging
- L38/10-5: 38-mm broadband (10-5 MHz) linear array for breast, small parts, interventional, musculoskeletal and vascular imaging. Biopsy guide available.
- C11/7-4: 11-mm broadband (7-4 MHz) curved array for neonatal head, pediatric and neonatal abdomen, vascular access and assessment and pediatric cardiac imaging
- HST/10-5: 25-mm broadband (10-5 MHz) linear array for intraoperative vascular, and superficial vascular imaging
- C8/8-5: 8-mm broadband (8-5 MHz) intracavitary array for prostate and indocavity exams. Stainless steel biopsy guide available.

### User Interface

- Controls: 2D, power Doppler, pulsed wave Doppler, continuous wave Doppler, M-mode, near gain, far gain, overall gain, save, print,

- freeze, cine review, text/picto, select, measure, optimize, depth, zoom, patient
- Narrow Imaging Sector feature on 2D and power Doppler modes
- User-defined labels
- Integrated 5" (12.7 cm) TFT color Liquid Crystal Display with brightness and contrast controls
- Integrated trackball for navigation
- Alpha-numeric keyboard
- System optimization presets for different patient body types

### System Parameters

- System dynamic range: approximately 140 dB
- Frame rate: up to 100 frames/second

### Image Storage and Cine

- Storage: internal 119 image memory (maximum) for off-line printing and review
- Cine: image retained for frame-by-frame viewing
- PC Direct Connectivity: connect directly to a PC using a cable link from a serial port (RS-232 or USB option) to a PC with SiteLink image manager software to download high resolution bitmap images

### Clinical Analysis Package

- OB calculations with report package via standard tables
- Cardiac calculation package
- Doppler vascular calculation package

### Measurement Tools

- Distance calipers – two sets
- Ellipse for area and circumference measurements
- Volume calculation

### Power

- Operates via battery or AC power – 1.5 to 4 hours on fully charged, new battery
- Battery: rechargeable lithium ion
- AC: via universal power adapter, 100-240 VAC, 50-60 Hz

### Display Annotation

- Text and pictograms

### Peripheral Connections

- Composite video output (NTSC/PAL) to videocassette recorder, video printer or external monitor
- Connect to PC via PC Direct cable or via SiteStand® mobile docking station to download high resolution bitmap images
- ECG/serial connector