

You wanted to
conduct full
echocardiograms
without sacrificing
mobility. The
SonoHeart ELITE:
Clinical
performance at
the point-of-care.

SonoHeart ELITE

Features and Options

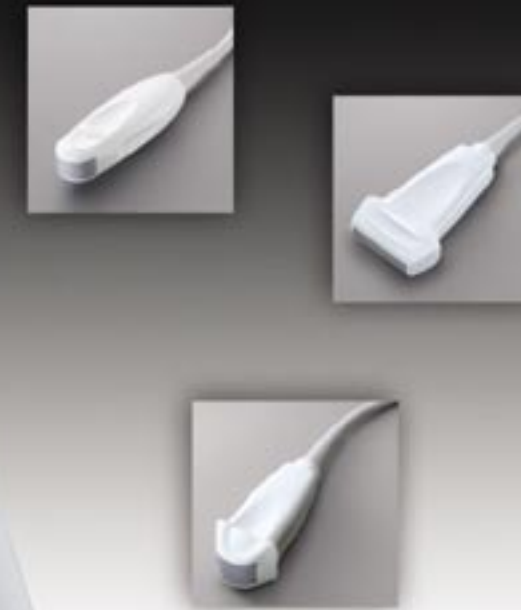
- High resolution 2D imaging
- Tissue Harmonic Imaging (THI)
- Continuous wave (CW) and pulsed wave (PW) Doppler
- Directional color power (DCPD) and color power Doppler
- M-mode
- ECG
- Adult, pediatric, neonatal and vascular imaging
- Stress echo
- Comprehensive cardiovascular reports
- Permanent documentation of studies
- Battery or AC powered
- Complete line of accessories

 SonoSite.

SONOHEART® ELITE



 SonoSite.



Clinically Validated Quality

SonoHeart ELITE provides the diagnostic quality necessary to give you confidence in your findings. The ELITE presents the opportunity to perform an echocardiogram anytime, in almost any setting to aid in immediate diagnosis and treatment.

"We were so impressed with the SonoHeart ELITE system that we decided to replace our traditional echo machine with one."

Comprehensive Features

The SonoHeart ELITE provides features usually found on much larger systems. The flexibility of the ELITE allows the user to perform complete cardiovascular examinations on adult, pediatric or vascular patients with a single system. Perform full studies anywhere in the office, hospital or satellite clinics without moving ill patients or large cart-based systems.

"It is amazing that CW Doppler, Harmonics and color imaging of this quality is available in such a small device."

Increased Efficiency

The SonoHeart ELITE's clear, intuitive interface saves time and increases workflow efficiency. By providing high quality imaging at the point-of-care, clinicians can reduce the time required to obtain the vital information needed to make clinical decisions.

"The time it takes to get information is virtually instant."

Convenience & Comfort

Echocardiography has never been more convenient. The lightweight SonoHeart ELITE and its suite of transducers were designed to reduce user strain while moving systems or performing exams. ELITE's unique portability and rugged construction mean it can comfortably fit into almost any clinical environment.

"Its image quality exceeds that of systems greater than 80 times its weight."

Cost Effective

The ELITE's durability makes it more cost effective by maximizing uptime with fewer service calls, meaning more time to focus on patient care. Plus the compact ELITE eliminates the need for expensive custom vans to transport the system between venues. With its comprehensive set of features, the SonoHeart ELITE offers a remarkable value.

"The SonoHeart ELITE system is a superb system with its combination of image quality, mobility and price."

SYSTEM SPECIFICATIONS



Clinical Applications

- Adult Cardiac
- Pediatric/Neonatal Cardiac
- Vascular
- Intraoperative Procedures
- Interventional Procedures

Imaging Modes

- 2D
- Directional color power Doppler (not available with L38 transducer)
- M-mode
- Continuous wave Doppler (option)
- Pulsed wave Doppler (option)
- Tissue Harmonic Imaging (option)

Physical Characteristics

- Height: 13.3" (33.8 cm)
- Width: 7.6" (19.3 cm)
- Depth: 2.5" (6.4 cm)
- Weight: 5.7 lb. (2.6 kg) with one transducer and battery attached

Transducers

- Lightweight with rapid, pinless connection
- C15e/4-2: 15-mm broadband (4-2 MHz) array for transthoracic imaging
- C11/7-4: 11-mm broadband (7-4 MHz) curved array for neonatal and pediatric cardiac imaging, and vascular access
- L38/10-5: 38-mm broadband (10-5 MHz) linear array for cerebrovascular, peripheral arterial and venous imaging, and vascular access. Needle guide available.
- Full line of non-cardiovascular transducers available.

User Interface

- Controls: 2D, continuous wave Doppler, pulsed wave Doppler, color power Doppler, directional color power Doppler, M-mode, THI, near gain, far gain, overall gain, save, print/record, freeze, cine review, text/picto, select, measure, optimize, depth, zoom, patient
- Integrated 5" (12.7 cm) TFT color LCD with brightness and contrast controls
- Integrated trackball for measurements and navigation

- Alpha-numeric keyboard
- ECG capability (option)

System Parameters

- System dynamic range: approximately 140 dB
- Frame rate: up to 100 frames/second
- Maximum Depth: 25 cm

Image Storage and Cine

- Storage: Internal 119 image memory (maximum) for review and off-line printing
- Video out (NTSC/PAL) for documentation via VCR or video printer
- Stress echo (option)
- Cine: image retained for frame-by-frame viewing
- PC Direct Connectivity: connect directly to a PC using a cable link from a serial port to a PC with SiteLink Image Manager software to download high resolution bitmap images

Clinical Analysis Packages

- Cardiac calculation package for both Doppler and M-mode
- Vascular calculation package

Measurement Tools

- Calipers for measuring distance, velocities, or time (2 sets)

Power

- Operates via battery or AC power
- Battery: rechargeable lithium ion
- AC: via universal power adaptor, 100-240 VAC, 50-60 Hz

Display Annotation

- Text and pictograms
- Programmable labels

Accessories

- Grab and Go carrying case
- Digital Mini-VCR, SVHS VCR
- Video printer (color and black/white)
- External monitor