

# ILLUMINATORS

**VARIVUE™**

**CLEARVUE 3™**

**RT-2™**

**ECONOVUE™**

**SHUTTERVUE™**

**MAMMOVUE™**

**MASTERVUE™**

**AMERICAN  
MEDICAL  
SALES, INC.**

**AMS®**

*Manufacturers of Medical Equipment*

American Medical Sales offers you exceptional value in a choice of quality steel-fabricated illuminator products. We offer you a combination of benefits that is unmatched by our competition: more than forty years of reliability, seven distinctive product lines designed to match your individual requirements, technical support for layouts and bids, a built-in reflector system in every product, a record of on-time delivery, and a wide choice of options and accessory equipment.

In this brochure you will find information concerning our full line of steel-fabricated illuminators, as shown below:

**General Radiology Illuminators**

*EconoVue* .....Page 3  
*RT-2* .....Page 4  
*ClearVue 3* .....Page 4  
*VariVue* .....Page 5

**General Radiology Illuminators with Shutters**

*ShutterVue* .....Page 8

**Size-Specific Mammography Illuminators**

*MammoVue* .....Page 9

**Mammography Illuminators with Shutters**

*MasterVue* .....Page 9

**All American Medical Sales steel-fabricated illuminators offer you:**

..... A reflector system for increased luminescence and more even lighting.

..... Film grips on both the top and bottom for flexibility in reading different modalities simultaneously.

..... Steel frame construction with thin-line design. Depth is just 3.5 inches.

..... Built-in ventilation system that draws cool air in from bottom of unit and permits warm air to ventilate out the top.

..... Finish is powder coated in hospital white—resists cracking, peeling or chipping inherent with standard paint fabrication.

..... UL and CSA listing. Six-foot 3-prong power cord.

**GENERAL PURPOSE RADIOLOGY ILLUMINATORS**

**ECONOVUE™  
100 SERIES**

All basic full-line features, plus...

- Economy pricing structure
- Available in 10 models
- Push and hold switching

**RT-2™  
500 SERIES**

All standard features plus...

- Instant-on switching
- Available in over 50 different models
- Patented mounting hanger bar for faster, easier, more accurate mounting
- Adaptable for a wide assortment of options

**CLEARVUE 3™  
700 SERIES**

All the features of RT-2 plus...

- Three bulbs for greater luminescence, more homogeneous lighting

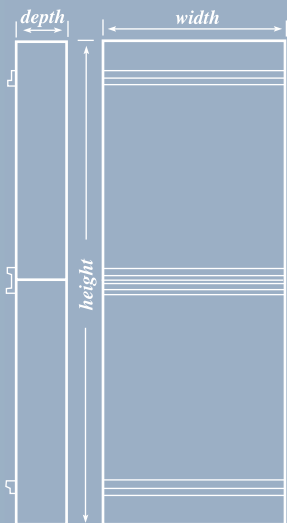
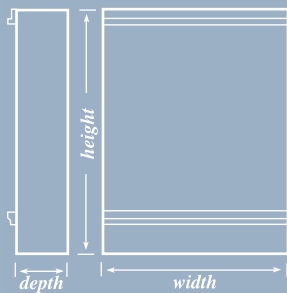
**VARIVUE™  
800 SERIES**

All the features of the Clearvue 3 Series plus...

- Advanced “mirrored metal” reflector system offering the equivalence of nearly five bulbs
- Film activated switch as standard feature
- Two level lighting as standard feature

ALSO ASK ABOUT OUR 200 PLUS LINE OF ILLUMINATORS WHICH ARE FABRICATED FROM ANODIZED ALUMINUM AND CAN BE CONFIGURED TO VIRTUALLY ANY CUSTOM SIZE YOU REQUIRE.

The EconoVue series answers the increasing need, particularly in the private practice, veterinary and small clinic markets, for an economic and durable illuminator. By incorporating cost saving techniques, such as steel construction and starter ballast technology, AMS can offer you a superior product at a significant savings over other economy grade products. We have an immediate inventory of EconoVue illuminators available for shipping, in most cases within 48 hours after receipt of your order.



### ONE-TIER

WALL MOUNTED • FREE STANDING MODELS

#### DIMENSIONS

| MODEL | Type                      | Width          | Height            | Depth           |
|-------|---------------------------|----------------|-------------------|-----------------|
| 101D  | One-Bank                  | 14" (35.6 cm)  | 21 3/4" (55.2 cm) | 3 1/2" (8.9 cm) |
| 101FT | One-Bank w/ feet & handle | 14" (35.6 cm)  | 21 3/4" (55.2 cm) | 3 1/2" (8.9 cm) |
| 101DM | One-Bank w/ desk mount    | 14" (35.6 cm)  | 21 3/4" (55.2 cm) | 3 1/2" (8.9 cm) |
| 102D  | Two-Bank                  | 28" (71.1 cm)  | 21 3/4" (55.2 cm) | 3 1/2" (8.9 cm) |
| 103D  | Three-Bank                | 42" (106.7 cm) | 21 3/4" (55.2 cm) | 3 1/2" (8.9 cm) |
| 104D  | Four-Bank                 | 56" (142.2 cm) | 21 3/4" (55.2 cm) | 3 1/2" (8.9 cm) |

### TWO-TIER

WALL MOUNTED • FREE STANDING MODELS

#### DIMENSIONS

| MODEL | Type             | Width              | Height          | Depth           |
|-------|------------------|--------------------|-----------------|-----------------|
| 122D  | Two-over-two     | 28 1/4" (71.8 cm)  | 43 1/2" (110.5) | 3 1/2" (8.9 cm) |
| 123D  | Three-over-three | 42 1/4" (106.7 cm) | 43 1/2" (110.5) | 3 1/2" (8.9 cm) |
| 124D  | Four-over-four   | 56 1/4" (142.2 cm) | 43 1/2" (110.5) | 3 1/2" (8.9 cm) |

### SPECIAL PROCEDURE WALL MOUNTED • FREE STANDING MODELS

#### DIMENSIONS

| MODEL  | Type              | Width         | Height        | Depth           |
|--------|-------------------|---------------|---------------|-----------------|
| 101SSF | One-Bank SpineVue | 15" (38.1 cm) | 39" (99.1 cm) | 3 1/2" (8.9 cm) |

See Page 11 for shipping weights

## RT-2™ ILLUMINATORS

GENERAL PURPOSE RADIOGRAPHIC ILLUMINATORS

The RT-2 series is available in over 50 sizes and configurations and offers a wide range of options. Popular models are available for immediate shipment, in most cases within 48 hours after receipt of your order. Continuous film grips at the top and bottom of each viewing area hold your film firmly in place, and a polymer-coated surface on the grips protects your film from damage. The mounting hanger bar which is standard with RT-2 illuminators makes it easy to attach the illuminator to the wall accurately and in a horizontal plane. Optional color accent panels can be ordered to coordinate with your office decor.

500 Series



## CLEARVUE 3™ ILLUMINATORS

GENERAL PURPOSE RADIOGRAPHIC ILLUMINATORS

700 Series



Recent advances in both general and specialty imaging equipment and film are producing clearer and more detailed radiographs. The x-ray illuminator is the final link between the radiologist and the diagnosis, and better lighting is essential to obtain the greatest diagnostic value from your films. To provide this critical lighting, the ClearVue 3 comes standard with three lamps and a special reflector system that eliminates hot spots and dark shadows. It provides balanced illumination in an attractive and affordable design.

# VARIVUE™ ILLUMINATORS

GENERAL PURPOSE RADIOGRAPHIC ILLUMINATORS

The unique reflector system of VariVue illuminators provides high luminescence and eliminates glare caused by light “spill over” between viewing areas. The reflector also helps to eliminate hot spots and dark shadows and provides over 3,500 nits of luminescence in a three-bulb design. Two-level lighting gives the radiologist full control of the reading environment.

VariVue comes standard with film-activated switches.

800 Series



Recessed



## MOBILEMOUNT™

The portability of the Mobilemount unit increases flexibility in diagnostic procedures and teaching. It is especially useful for operating rooms, emergency rooms, classrooms and other teaching environments. Mobile Mount from AMS features sturdy steel construction, angle adjustment and two shelves for storage of essential items.

## ACCENT COLORS

Coordinate your RT-2, ClearVue3 or VariVue illuminator with your general office decor. Order with ACCENT COLORS that match the most popular examination tables and cabinetry. Optional colors include rose, teal, blue and warm gray. Should you change color schemes at a future date, you can order new accent panels for your illuminators.



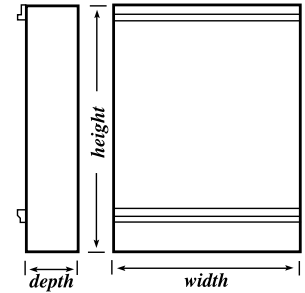
# ONE-TIER ILLUMINATORS

## WALL MOUNTED • FREE STANDING MODELS

| SERIES |            |         | DIMENSIONS        |                |                    |                 |
|--------|------------|---------|-------------------|----------------|--------------------|-----------------|
| RT-2   | CLEARVUE 3 | VARIVUE | Type              | Width          | Height             | Depth           |
| 501D   | 701D       | 801D    | One-Bank          | 14" (35.6 cm)  | 21 3/4" (55.2 cm)  | 3 1/2" (8.9 cm) |
| 502D   | 702D       | 802D    | Two-Bank          | 28" (71.1 cm)  | 21 3/4" (55.2 cm)  | 3 1/2" (8.9 cm) |
| 503D   | 703D       | 803D    | Three-Bank        | 42" (106.7 cm) | 21 3/4" (55.2 cm)  | 3 1/2" (8.9 cm) |
| 504D   | 704D       | 804D    | Four-Bank         | 56" (142.2 cm) | 21 3/4" (55.2 cm)  | 3 1/2" (8.9 cm) |
| 505D   | 705D       | 805D    | Five-Bank         | 70" (177.8 cm) | 21 3/4" (55.2 cm)  | 3 1/2" (8.9 cm) |
| 506D   | 706D       | 806D    | Six-Bank          | 84" (213.4 cm) | 21 3/4" (55.2 cm)  | 3 1/2" (8.9 cm) |
| 501SSF | 701SSF     | 801SSF  | One-Bank SpineVue | 14" (35.6 cm)  | 40 3/4" (103.5 cm) | 3 1/2" (8.9 cm) |
| 502SSF | 702SSF     | 802SSF  | Two-Bank SpineVue | 28" (71.1 cm)  | 40 3/4" (103.5 cm) | 3 1/2" (8.9 cm) |

## MOBILEMOUNT™ MODELS

| SERIES |            |         | DIMENSIONS |                |
|--------|------------|---------|------------|----------------|
| RT-2   | CLEARVUE 3 | VARIVUE | Type       | Width          |
| 501MM  | 701MM      | 801MM   | One-Bank   | 19" (48.3 cm)  |
| 502MM  | 702MM      | 802MM   | Two-Bank   | 33" (83.8 cm)  |
| 503MM  | 703MM      | 803MM   | Three-Bank | 47" (119.4 cm) |
| 504MM  | 704MM      | 804MM   | Four-Bank  | 61" (154.9 cm) |



One-Tier Models

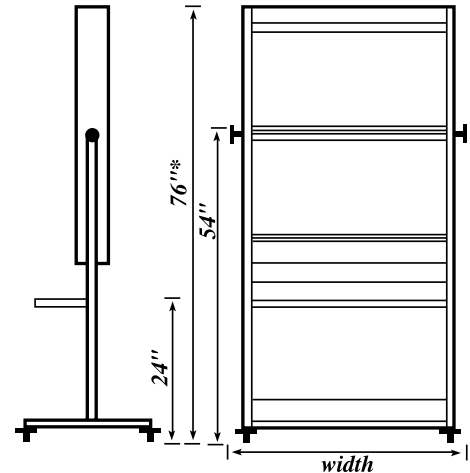
# TWO-TIER ILLUMINATORS

## WALL MOUNTED • FREE STANDING MODELS

| SERIES |            |         | DIMENSIONS       |                    |                    |                 |
|--------|------------|---------|------------------|--------------------|--------------------|-----------------|
| RT-2   | CLEARVUE 3 | VARIVUE | Type             | Width              | Height             | Depth           |
| 521D   | 721D       | 821D    | One-over-one     | 14 1/4" (36.2 cm)  | 43 1/2" (110.5 cm) | 3 1/2" (8.9 cm) |
| 522D   | 722D       | 822D    | Two-over-two     | 28 1/4" (71.8 cm)  | 43 1/2" (110.5 cm) | 3 1/2" (8.9 cm) |
| 523D   | 723D       | 823D    | Three-over-three | 42 1/4" (107.3 cm) | 43 1/2" (110.5 cm) | 3 1/2" (8.9 cm) |
| 524D   | 724D       | 824D    | Four-over-four   | 56 1/4" (142.9 cm) | 43 1/2" (110.5 cm) | 3 1/2" (8.9 cm) |
| 525D   | 725D       | 825D    | Five-over-five   | 70 1/4" (178.4 cm) | 43 1/2" (110.5 cm) | 3 1/2" (8.9 cm) |
| 526D   | 726D       | 826D    | Six-over-six     | 84 1/4" (214.0 cm) | 43 1/2" (110.5 cm) | 3 1/2" (8.9 cm) |

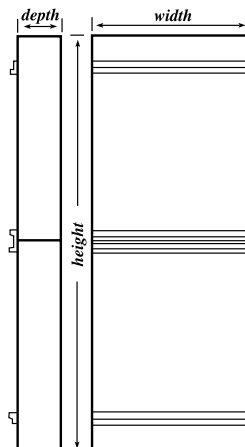
## MOBILEMOUNT™ MODELS (See photograph on back panel)

| SERIES |            |         | DIMENSIONS       |                |
|--------|------------|---------|------------------|----------------|
| RT-2   | CLEARVUE 3 | VARIVUE | Type             | Width          |
| 521MM  | 721MM      | 821MM   | One-over-one     | 19" (48.3 cm)  |
| 522MM  | 722MM      | 822MM   | Two-over-two     | 33" (83.8 cm)  |
| 523MM  | 723MM      | 823MM   | Three-over-three | 47" (119.4 cm) |
| 524MM  | 724MM      | 824MM   | Four-over-four   | 61" (154.9 cm) |



MobileMount™ Models

See Page 11 for shipping weights



Two-Tier Models

Order larger models in any style, and have us help you with layouts and bids.

# ONE-TIER ILLUMINATORS

## RECESSED MODELS (See notes regarding installation on page 10)

| SERIES   |            |          |                   | DIMENSIONS         |                    |                 |
|----------|------------|----------|-------------------|--------------------|--------------------|-----------------|
| RT-2     | CLEARVUE 3 | VARIVUE  | Type              | Width              | Height             | Depth           |
| 501R     | 701R       | 801R     | One-Bank          | 14 1/2" (36.8 cm)  | 22 1/4" (56.5 cm)  | 3 1/2" (8.9 cm) |
| 502R     | 702R       | 802R     | Two-Bank          | 28 1/2" (72.4 cm)  | 22 1/4" (56.5 cm)  | 3 1/2" (8.9 cm) |
| 503R     | 703R       | 803R     | Three-Bank        | 42 1/2" (108.0 cm) | 22 1/4" (56.5 cm)  | 3 1/2" (8.9 cm) |
| 504R     | 704R       | 804R     | Four-Bank         | 56 1/2" (143.5 cm) | 22 1/4" (56.5 cm)  | 3 1/2" (8.9 cm) |
| 505R     | 705R       | 805R     | Five-Bank         | 70 1/2" (179.1 cm) | 22 1/4" (56.5 cm)  | 3 1/2" (8.9 cm) |
| 506R     | 706R       | 806R     | Six-Bank          | 84 1/2" (214.6 cm) | 22 1/4" (56.5 cm)  | 3 1/2" (8.9 cm) |
| 501SSF-R | 701SSF-R   | 801SSF-R | One-Bank SpineVue | 14 1/2" (36.8 cm)  | 41 1/4" (104.4 cm) | 3 1/2" (8.9 cm) |
| 502SSF-R | 702SSF-R   | 802SSF-R | Two-Bank SpineVue | 28 1/2" (72.4 cm)  | 41 1/4" (104.4 cm) | 3 1/2" (8.9 cm) |

## CONSOLEMOUNT™ MODELS Specify 7, 20 or 35 degree angles

| SERIES |            |         |            | DIMENSIONS         |     | ANGLE            |                   |                 |
|--------|------------|---------|------------|--------------------|-----|------------------|-------------------|-----------------|
| RT-2   | CLEARVUE 3 | VARIVUE | Type       | Width              |     | A                | B                 | C               |
| 501CM  | 701CM      | 801CM   | One-Bank   | 14 1/4" (36.2 cm)  | 7°  | 6 1/4" (15.9 cm) | 22 1/2" (56.3 cm) | 3 1/2" (8.9 cm) |
| 502CM  | 702CM      | 802CM   | Two-Bank   | 28 1/4" (71.8 cm)  | 20° | 11" (27.9 cm)    | 22" (55.0 cm)     | 3 1/2" (8.9 cm) |
| 503CM  | 703CM      | 803CM   | Three-Bank | 42 1/4" (107.3 cm) |     |                  |                   |                 |
| 504CM  | 704CM      | 804CM   | Four-Bank  | 56 1/4" (142.9 cm) | 35° | 16" (40.6 cm)    | 19 3/4" (49.4 cm) | 3 1/2" (8.9 cm) |
| 505CM  | 705CM      | 805CM   | Five-Bank  | 70 1/4" (178.4 cm) |     |                  |                   |                 |
| 506CM  | 706CM      | 806CM   | Six-Bank   | 84 1/4" (214.0 cm) |     |                  |                   |                 |

# TWO-TIER ILLUMINATORS

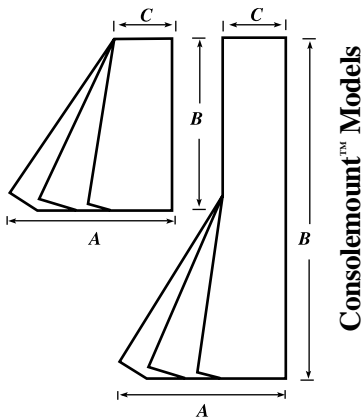
## RECESSED MODELS (See notes regarding installation on back cover)

| SERIES |            |         |                  | DIMENSIONS         |                    |                 |
|--------|------------|---------|------------------|--------------------|--------------------|-----------------|
| RT-2   | CLEARVUE 3 | VARIVUE | Type             | Width              | Height             | Depth           |
| 521R   | 721R       | 821R    | One-over-one     | 14 1/2" (37.5 cm)  | 43 3/4" (111.8 cm) | 3 1/2" (8.9 cm) |
| 522R   | 722R       | 822R    | Two-over-two     | 28 1/2" (73.1 cm)  | 43 3/4" (111.8 cm) | 3 1/2" (8.9 cm) |
| 523R   | 723R       | 823R    | Three-over-three | 42 1/2" (108.7 cm) | 43 3/4" (111.8 cm) | 3 1/2" (8.9 cm) |
| 524R   | 724R       | 824R    | Four-over-four   | 56 1/2" (144.3 cm) | 43 3/4" (111.8 cm) | 3 1/2" (8.9 cm) |
| 525R   | 725R       | 825R    | Five-over-five   | 70 1/2" (179.9 cm) | 43 3/4" (111.8 cm) | 3 1/2" (8.9 cm) |
| 526R   | 726R       | 826R    | Six-over-six     | 84 1/2" (215.5 cm) | 43 3/4" (111.8 cm) | 3 1/2" (8.9 cm) |

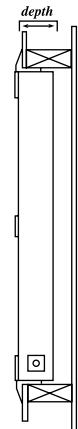
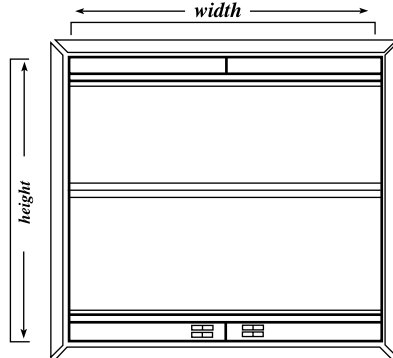
## CONSOLEMOUNT™ MODELS (Specify 7, 20 or 35 degree angles)

| SERIES |            |         |                  | DIMENSIONS         |     | ANGLE            |                   |                 |
|--------|------------|---------|------------------|--------------------|-----|------------------|-------------------|-----------------|
| RT-2   | CLEARVUE 3 | VARIVUE | Type             | Width              |     | A                | B                 | C               |
| 521CM  | 721CM      | 821CM   | One-over-one     | 14 1/4" (37.5 cm)  | 7°  | 6 1/4" (15.9 cm) | 22 1/2" (56.3 cm) | 3 1/2" (8.9 cm) |
| 522CM  | 722CM      | 822CM   | Two-over-two     | 28 1/4" (73.1 cm)  | 20° | 11" (27.9 cm)    | 22" (55.0 cm)     | 3 1/2" (8.9 cm) |
| 523CM  | 723CM      | 823CM   | Three-over-three | 42 1/4" (108.7 cm) |     |                  |                   |                 |
| 524CM  | 724CM      | 824CM   | Four-over-four   | 56 1/4" (144.3 cm) | 35° | 16" (40.6 cm)    | 19 3/4" (49.4 cm) | 3 1/2" (8.9 cm) |
| 525CM  | 725CM      | 825CM   | Five-over-five   | 70 1/4" (179.9 cm) |     |                  |                   |                 |
| 526CM  | 726CM      | 826CM   | Six-over-six     | 84 1/4" (215.5 cm) |     |                  |                   |                 |

See Page 11 for shipping weights



Consolemount™ Models



Recessed Models

**RECESSED ILLUMINATORS**  
 Rough-in dimensions for recessed models. Add 1/2" for mounting all recessed illuminators

# SHUTTERVUE™ ILLUMINATORS

GENERAL PURPOSE RADIOGRAPHIC ILLUMINATORS WITH SHUTTERS

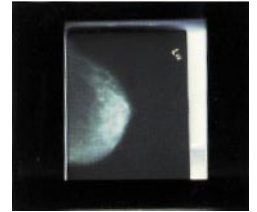
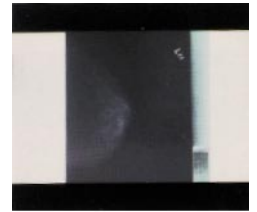
ShutterVue offers you the opportunity to obtain maximum diagnostic information from your films. Through the use of its 4-way manual shutter system, it eliminates extraneous light and focuses on image detail. The light is homogeneous throughout the entire viewing area, and ShutterVue has a rheostat adjustment so you can match the light intensity to the specific film density. The ACR now has issued guidelines for mammography viewing (see MasterVue on page 9), but you can now provide this superior reading environment for your general radiographic viewing.

## You can see the difference...

These photos dramatically demonstrate how variable light control and masking of extraneous light increase the ability to visualize subtle pathologies.

**Top:** Without masking and at mid-range lighting.

**Bottom:** With masking and having adjusted lighting to match film density. Notice the increased level of detail easily seen in the film.



Model 108008  
Two Bank



Model 108004  
One Bank

## SHUTTERVUE™ • General Purpose Radiology for Film Masking

| Model  | Max. Viewing Area | Maximum Films Held* | # of Lamps  | Light Intensity Range (nits)(cd/m <sup>2</sup> ) | Height            | Width             | Depth           |
|--------|-------------------|---------------------|-------------|--|-------------------|-------------------|-----------------|
| 108004 | 44 x 44 cm        | 1 - 14"x17"         | 5 - 20 Watt | 1,700 to 4,800                                   | 29" (72.2cm)      | 29" (72.2cm)      | 4 1/8" (10.4cm) |
| 108008 | 75 x 44 cm        | 2 - 14"x17"         | 5 - 30 Watt | 1,700 to 6,050                                   | 29" (72.2cm)      | 41 1/8" (102.8cm) | 4 1/8" (10.4cm) |
| 108016 | 105 x 44 cm       | 3 - 14"x17"         | 5 - 36 Watt | 1,700 to 5,880                                   | 29" (72.2cm)      | 53 3/8" (133.4cm) | 4 1/8" (10.4cm) |
| 108020 | 145 x 44 cm       | 4 - 14"x17"         | 5 - 58 Watt | 1,700 to 6,050                                   | 29" (72.2cm)      | 71 3/4" (179cm)   | 4 1/8" (10.4cm) |
| 108024 | 44 x 96 cm        | 1 - 14"x36"         | 5 - 36 Watt | 1,700 to 5,050                                   | 53 3/8" (133.4cm) | 29" (72.2cm)      | 4 1/8" (10.4cm) |

Other sizes and models, including recessed models can be ordered. Call for details.

All models listed above have 4 shutters.

\* Smaller film sizes can be accommodated.

See Page 11 for shipping weights

# MAMMOVUE™ ILLUMINATORS

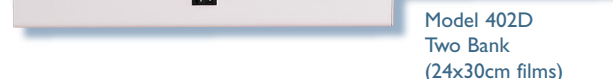
GENERAL PURPOSE RADIOGRAPHIC ILLUMINATORS  
MAMMOGRAPHY

MammoVue is an economical illuminator designed specifically for viewing small format films, providing compliance orientation without the need for shutters. It features excellent lighting and offers a choice of many different configurations. An optional variable light control enables you to match the light intensity to the film density.

Model 302D  
Two Bank  
(18x24cm films)



Model 402D  
Two Bank  
(24x30cm films)



## MAMMOVUE™ • Mammography - General Purpose Radiology

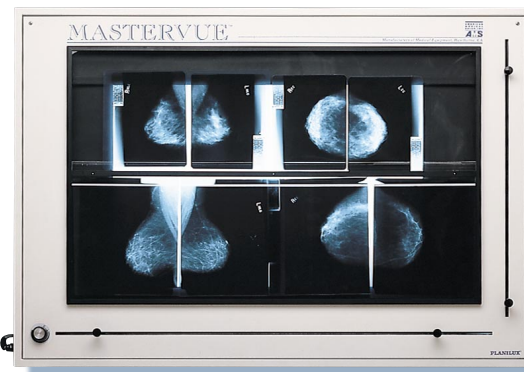
| MODEL Wall Mounted | MODEL Recessed | MODEL Consolemount | Description    | Number of Lamps | Height           | Width             |
|--------------------|----------------|--------------------|----------------|-----------------|------------------|-------------------|
| 18 x 24cm films    |                |                    |                |                 |                  |                   |
| 302D               | 302R           | 302CM              | Two-Bank       | 4-15 Watt       | 14" (35.6cm)     | 19 5/8" (48.3cm)  |
| 304D               | 304R           | 304CM              | Four-Bank      | 4-30 Watt       | 14" (35.6cm)     | 37 1/4" (95.9cm)  |
| 322D               | 322R           | 322CM              | Two-over-Two   | 8-15 Watt       | 28" (71.1cm)     | 19 5/8" (48.3cm)  |
| 324D               | 324R           | 324CM              | Four-over-Four | 8-30 Watt       | 28" (71.1cm)     | 37 1/2" (95.3cm)  |
| 24 x 30cm films    |                |                    |                |                 |                  |                   |
| 402D               | 402R           | 402CM              | Two-Bank       | 4-20 Watt       | 16 3/4" (41.6cm) | 25 5/8" (65.1cm)  |
| 404D               | 404R           | 404CM              | Four-Bank      | 4-40 Watt       | 16 3/4" (41.6cm) | 49 5/8" (126.0cm) |
| 422D               | 422R           | 422CM              | Two-over-Two   | 8-20 Watt       | 32 1/4" (83.2cm) | 25 5/8" (65.1cm)  |
| 424D               | 424R           | 424CM              | Four-over-Four | 8-40 Watt       | 32 1/4" (83.2cm) | 49 5/8" (126.0cm) |

All above units - Light Intensity 4,400 (nits) (1) Select a 7°, 20° or 35° angle for a consolemount unit. (2) Dimensions are for wall mounted units. Add 1/2" to height and width for suggested rough-in sizes for recessed units. Add 1/4" to width for console mount units. Height of consolemount units will depend on angle selected. All units are 3 1/4" deep; lower portion of consolemounted units project out further. (3) Weight is for wall mounted units. Add 10% for recessed and 20% for consolemount units.

# MASTERVUE™ ILLUMINATOR

MAMMOGRAPHY - ILLUMINATOR WITH SHUTTERS

Engineered for full ACR compliance for mammography at an affordable cost, the new shuttered MasterVue combines quality construction with exceptional value. It offers required luminescence levels, adjustable light intensity, full film masking and a homogeneous light source.



Model 108000

## MASTERVUE™ • Mammography - Illuminator with Shutters

| Model  | Max. Viewing Area | Maximum Films Held                            | # of Lamps | Light Intensity Range (nits/cd/m <sup>2</sup> ) | Height           | Width             | Depth         | Special Feature |
|--------|-------------------|---|------------|---|------------------|-------------------|---------------|-----------------|
| 108000 | 96x60cm           | 8 - 18x24cm or 8-24x30cm in a 4-over-4 format | 10-36 Watt | 1,700 to 7,400                                  | 34 1/8" (87.6cm) | 45 5/8" (115.9cm) | 4.0" (10.2cm) | 4 Shutters      |

See Page 11 for shipping weights

# FEATURES (S) Standard (O) Optional (A) Available

## VARIVUE, CLEARVUE, RT-2, ECONOVUE, MASTERVUE, SHUTTERVUE AND MAMMOVUE

| FEATURES   | EconoVue    | RT-2        | ClearVue3   | VariVue        | ShutterVue           | MammoVue    | MasterVue   |
|--|-------------|-------------|-------------|----------------|----------------------|-------------|-------------|
| Frame Construction                                   | Steel       | Steel       | Steel       | Steel          | Steel                | Steel       | Steel       |
| Finish   | Powder Coat | Powder Coat | Powder Coat | Powder Coat    | Powder Coat          | Powder Coat | Powder Coat |
| Film Grips - Top & Bottom                            | S           | S           | S           | S              | Top                  | S           | Center      |
| Standard No. of Lamps                                | 2           | 2           | 3           | 3              | 5                    | 4           | 10          |
| Depth  | 3.5"        | 3.5"        | 3.5"        | 3.5"           | 4"                   | 3.25"       | 4"          |
| Reflectors   | S           | S           | S           | S              |                      |             |             |
| Slide-A-Way Viewing Panels                           | S           | S           | S           | S <sup>1</sup> |                      | S           |             |
| UL Listed/CSA Certified                              | Yes         | Yes         | Yes         | Yes            |                      | Yes         |             |
| Two Level Lighting                                   |             | O           | O           | S              |                      | O           |             |
| Rapid Start Ballast                                  |             | S           | S           | S              | S                    | S           | S           |
| Quick Mount Hanging System                           |             | S           | S           | S              |                      | S           |             |
| Accent Colors Available                              |             | O           | O           | O              |                      |             |             |
| Clip-Lock Viewing Panel Guard                        | S           | S           | S           | S              |                      |             |             |
| Luminance (cd/m <sup>2</sup> or nits) <sup>2,3</sup> | 2,430       | 2,550       | 3,460       | 3,530          | 1,700-5,000          | 4,200       | 1,700-7,400 |
| Amps <sup>3</sup>                                    | 0.68        | 0.75        | 0.66        | 0.66           | 2                    | 1.50        | 2.60        |
| Watts <sup>3</sup>                                   | 30          | 30          | 45          | 45             | 100-290 <sup>5</sup> | 60-160      | 360         |
| <b>OPTIONS</b>                                       |             |             |             |                |                      |             |             |
| Variable Light Control                               |             | O           | O           | O              | S                    | O           | S           |
| Film Activated Switch                                |             | O           | O           | S              |                      | O           |             |
| Master Switch  |             | O           | O           | O              |                      | O           |             |
| Remote Switch Boxes                                  |             | O           | O           | O              |                      |             |             |
| Hospital Grade Power Cords                           | O           | O           | O           | O              | O                    | O           | O           |
| Upgrade to 3 Lamps                                   |             | O           | S           | S              |                      |             |             |
| Upgrade to 4 Lamps                                   |             | O           | O           | O              |                      |             |             |
| Upgrade to 5 Lamps                                   |             | O           | O           | O              |                      |             |             |
| Circular Lamps                                       |             |             |             |                |                      |             |             |
| Hardwire   |             | O           | O           | O              | O                    | O           | O           |
| Special Voltage/Export Models                        | O           | O           | O           | O              | O                    | O           | O           |
| <b>CONFIGURATIONS</b>                                |             |             |             |                |                      |             |             |
| Wall-Mounted   | A           | A           | A           | A              | S                    | A           | S           |
| Recessed   |             | A           | A           | A              |                      | A           |             |
| Two-Tier Units                                       | A           | A           | A           | A              | A                    | A           | S           |
| Console Mount Units                                  |             | A           | A           | A              |                      | A           | A           |
| Mobilemount Units                                    | A           | A           | A           | A              | O                    | A           | O           |
| Corner Connecting Sets                               |             | A           | A           | A              |                      |             |             |
| 14" x 36" format                                     | A           | A           | A           | A              | A                    |             |             |
| 14" x 51" format                                     |             | A           | A           | A              |                      |             |             |
| 12" x 24" format                                     |             |             |             |                |                      | A           |             |
| Custom formats possible                              |             |             |             |                |                      | A           |             |

- Notes:
- 1 VariVue units have film activated switches which must be protected when sliding out viewing panels.
  - 2 Measurements made with standard light configurations. Additional lamps will increase these ratings dramatically.
  - 3 These ratings are per 14" x 17" viewing area using standard configurations.
  - 4 See our Mammography Illuminator Fast Fax Literature for details on specialty mammography units.
  - 5 Differs with specific model ordered, see page 11.

### ELECTRICAL

**POWER INPUT:** 120 V, 60 Hz (other voltages available)

**LINE CORD:** 6' (183 cm), 3-prong polarized plug. Generally, cords exit lower portion of right side of illuminators. Alternative locations can be specified.

**POWER CONNECTION - RECESSED UNITS:** A hole for 1/2" conduit is located on the lower portion of the right side of the illuminator. A 3-wire connector is provided inside the unit. Alternative locations can be specified.

**ADDITIONAL INFORMATION:** Architectural "Cut Sheets" and "Seismic Anchorage Data" are available upon request or by visiting our website at [www.ams4illuminators.com](http://www.ams4illuminators.com).

**CONSTRUCTION:** Housings are made from 18 and 22 gauge CRS, formed and secured by spot welding. Viewing Panel is 1/8" thick, shatter resistant, translucent white cast acrylic.

**MOBILEMOUNT:** Stand is made of 16 gauge steel tubing with two 18 gauge 12" deep shelves. Four 3-inch wheels; front two wheels lock. Finished in hospital white powder coat paint.

**SWITCHES:** Standard location is bottom center, clustered. Rocker style, one or two-pole, two or three position switches are used. Variable light controls use a rotary switch with a positive on/off click control. Standard location for ShutterVue and MasterVue is bottom left.

# SHIPPING WEIGHTS

## VARIVUE, CLEARVUE, RT-2, ECONOVUE, MASTERVUE, SHUTTERVUE AND MAMMOVUE

| VariVue  | Weight          | Amps | Watts | ClearVue 3 | RT-2     | Weight          | Amps | Watts | EconoVue          | Weight         | Amps        | Watts        |
|----------|-----------------|------|-------|------------|----------|-----------------|------|-------|-------------------|----------------|-------------|--------------|
| 801D     | 18# (8.2 kg)    | 0.66 | 45    | 701D       | 501D     | 17# (7.7 kg)    | 0.66 | 45    | 101D              | 17# (7.7 kg)   | 0.68        | 30           |
| 802D     | 36# (16.3 kg)   | 1.32 | 90    | 702D       | 502D     | 34# (15.4 kg)   | 1.32 | 90    | 101FT             | 17# (7.7 kg)   | 0.68        | 30           |
| 803D     | 54# (24.5 kg)   | 1.98 | 135   | 703D       | 503D     | 51# (23.1 kg)   | 1.98 | 135   | 101DM             | 19# (8.6 kg)   | 0.68        | 30           |
| 804D     | 105# (47.6 kg)  | 2.64 | 180   | 704D       | 504D     | 101# (45.8 kg)  | 2.64 | 180   | 102D              | 34# (15.4 kg)  | 1.36        | 60           |
| 805D     | 123# (55.8 kg)  | 3.30 | 225   | 705D       | 505D     | 118# (53.5 kg)  | 3.30 | 225   | 103D              | 51# (23.2 kg)  | 2.04        | 90           |
| 806D     | 141# (64.0 kg)  | 3.96 | 270   | 706D       | 506D     | 135# (61.2 kg)  | 3.96 | 270   | 104D              | 68# (30.9 kg)  | 2.72        | 120          |
| 801SSF   | 28# (12.7 kg)   | 1.25 | 90    | 701SF      | 501SF    | 28# (12.7 kg)   | 1.25 | 90    | 122D              | 68# (30.9 kg)  | 2.72        | 120          |
| 802SSF   | 56# (25.4 kg)   | 2.50 | 180   | 702SSF     | 502SSF   | 52# (24.5 kg)   | 2.50 | 180   | 123D              | 102# (46.4 kg) | 4.08        | 180          |
| 801MM    | 58# (26.3 kg)   | 0.66 | 45    | 701MM      | 501MM    | 57# (24.5 kg)   | 0.66 | 45    | 124D              | 136# (61.8 kg) | 5.44        | 240          |
| 802MM    | 81# (36.7 kg)   | 1.32 | 90    | 702MM      | 502MM    | 79# (25.9 kg)   | 1.32 | 90    | 101SSF            | 25# (11.4 kg)  | 0.67        | 60           |
| 803MM    | 104# (47.2 kg)  | 1.98 | 135   | 703MM      | 503MM    | 101# (45.8 kg)  | 1.98 | 135   |                   |                |             |              |
| 804MM    | 160# (72.6 kg)  | 2.64 | 180   | 704MM      | 504MM    | 178# (80.7 kg)  | 2.64 | 180   |                   |                |             |              |
| 821D     | 39# (17.7 kg)   | 1.32 | 45    | 721D       | 521D     | 37# (16.8 kg)   | 1.32 | 45    | <b>MasterVue</b>  | <b>Weight</b>  | <b>Amps</b> | <b>Watts</b> |
| 822D     | 78# (35.4 kg)   | 2.64 | 180   | 722D       | 522D     | 74# (33.6 kg)   | 2.64 | 180   | 108000            | 60# (28kg)     | 2.6         | 360          |
| 823D     | 114# (51.7 kg)  | 3.96 | 270   | 723D       | 523D     | 108# (49.2 kg)  | 3.96 | 270   | <b>ShutterVue</b> | <b>Weight</b>  | <b>Amps</b> | <b>Watts</b> |
| 824D     | 220# (99.8 kg)  | 5.28 | 360   | 724D       | 524D     | 212# (96.2 kg)  | 5.28 | 360   | 108004            | 66# (30kg)     | 3.0         | 100          |
| 825D     | 249# (113.0 kg) | 6.6  | 450   | 725D       | 525D     | 239# (108.4 kg) | 6.6  | 450   | 108008            | 88# (40kg)     | 3.5         | 150          |
| 826D     | 282# (127.9 kg) | 7.92 | 540   | 726D       | 526D     | 270# (122.5 kg) | 7.92 | 540   | 108016            | 105.6# (48kg)  | 4.0         | 180          |
| 821MM    | 79# (35.8 kg)   | 1.32 | 45    | 721MM      | 521MM    | 77# (34.9 kg)   | 1.32 | 45    | 108020            | 140.8# (64kg)  | 7.0         | 290          |
| 822MM    | 123# (55.8 kg)  | 2.64 | 180   | 722MM      | 522MM    | 119# (54.0 kg)  | 2.64 | 180   | 108024            | 107.8# (49kg)  | 4.0         | 180          |
| 823MM    | 164# (74.4 kg)  | 3.96 | 270   | 723MM      | 523MM    | 158# (71.7 kg)  | 3.96 | 270   |                   |                |             |              |
| 824MM    | 275# (124.7 kg) | 5.28 | 360   | 724MM      | 524MM    | 267# (121.1 kg) | 5.28 | 360   | <b>MammoVue</b>   | <b>Weight</b>  | <b>Amps</b> | <b>Watts</b> |
| 801R     | 20# (9.1 kg)    | 0.66 | 45    | 701R       | 501R     | 19# (8.6 kg)    | 0.66 | 45    | 302D,R,CM         | 15# (6.8kg)    | 1.5         | 60           |
| 802R     | 39# (17.7 kg)   | 1.32 | 90    | 702R       | 502R     | 37# (16.8 kg)   | 1.32 | 90    | 304D,R,CM         | 23# (10.5 kg)  | 1.5         | 120          |
| 803R     | 59# (26.8 kg)   | 1.98 | 135   | 703R       | 503R     | 56# (25.4 kg)   | 1.98 | 135   | 322D,R,CM         | 30# (13.6 kg)  | 3.0         | 120          |
| 804R     | 109# (49.4 kg)  | 2.64 | 180   | 704R       | 504R     | 105# (47.6 kg)  | 2.64 | 180   | 324D,R,CM         | 46# (20.9kg)   | 3.0         | 240          |
| 805R     | 129# (58.5 kg)  | 3.30 | 225   | 705R       | 505R     | 124# (56.3 kg)  | 3.30 | 225   | 402D,R,CM         | 17# (7.7kg)    | 1.5         | 80           |
| 806R     | 149# (67.6 kg)  | 3.96 | 270   | 706R       | 506R     | 143# (64.5 kg)  | 3.96 | 270   | 404D,R,CM         | 26# (11.8kg)   | 1.5         | 160          |
| 801SSF-R | 31# (14.1 kg)   | 1.25 | 90    | 701SSF-R   | 501SSF-R | 30# (13.6 kg)   | 1.25 | 90    | 422D,R,CM         | 34# (15.5kg)   | 3.0         | 160          |
| 802SSF-R | 60# (27.2 kg)   | 2.50 | 180   | 702SSF-R   | 502SSF-R | 58# (26.3 kg)   | 2.50 | 180   | 424D,R,CM         | 52# (23.6kg)   | 3.0         | 320          |
| 801CM    | 24# (10.9 kg)   | 0.66 | 45    | 701CM      | 501CM    | 23# (10.5 kg)   | 0.66 | 45    |                   |                |             |              |
| 802CM    | 42# (19.1 kg)   | 1.32 | 90    | 702CM      | 502CM    | 40# (18.2 kg)   | 1.32 | 90    |                   |                |             |              |
| 803CM    | 60# (27.2 kg)   | 1.98 | 135   | 703CM      | 503CM    | 57# (25.9 kg)   | 1.98 | 135   |                   |                |             |              |
| 804CM    | 111# (50.4 kg)  | 2.64 | 180   | 704CM      | 504CM    | 107# (48.5 kg)  | 2.64 | 180   |                   |                |             |              |
| 805CM    | 129# (58.5 kg)  | 3.30 | 225   | 705CM      | 505CM    | 124# (56.2 kg)  | 3.30 | 225   |                   |                |             |              |
| 806CM    | 147# (66.7 kg)  | 3.96 | 270   | 706CM      | 506CM    | 141# (64.0 kg)  | 3.96 | 270   |                   |                |             |              |
| 821R     | 42# (19.1 kg)   | 1.32 | 45    | 721R       | 521R     | 40# (18.1 kg)   | 1.32 | 45    |                   |                |             |              |
| 822R     | 82# (45.8 kg)   | 2.64 | 180   | 722R       | 522R     | 78# (35.4 kg)   | 2.64 | 180   |                   |                |             |              |
| 823R     | 119# (54.0 kg)  | 3.96 | 270   | 723R       | 523R     | 113# (51.3 kg)  | 3.96 | 270   |                   |                |             |              |
| 824R     | 223# (102.2 kg) | 5.28 | 360   | 724R       | 524R     | 215# (97.5 kg)  | 5.28 | 360   |                   |                |             |              |
| 825R     | 252# (114.3 kg) | 6.64 | 450   | 725R       | 525R     | 242# (109.9 kg) | 6.64 | 450   |                   |                |             |              |
| 826R     | 285# (129 kg)   | 7.92 | 540   | 726R       | 526R     | 273# (123.8 kg) | 7.92 | 540   |                   |                |             |              |
| 821CM    | 46# (20.9 kg)   | 1.32 | 45    | 721CM      | 521CM    | 44# (20.0 kg)   | 1.32 | 45    |                   |                |             |              |
| 822CM    | 82# (37.2 kg)   | 2.64 | 180   | 722CM      | 522CM    | 78# (35.5 kg)   | 2.64 | 180   |                   |                |             |              |
| 823CM    | 118# (53.5 kg)  | 3.96 | 270   | 723CM      | 523CM    | 112# (50.9 kg)  | 3.96 | 270   |                   |                |             |              |
| 824CM    | 226# (102.5 kg) | 5.28 | 360   | 724CM      | 524CM    | 218# (98.9 kg)  | 5.28 | 360   |                   |                |             |              |
| 825CM    | 255# (115.7 kg) | 6.6  | 450   | 725CM      | 525CM    | 245# (111.1 kg) | 6.6  | 450   |                   |                |             |              |
| 826CM    | 288# (130.6 kg) | 7.92 | 540   | 726CM      | 526CM    | 276# (125.2 kg) | 7.92 | 540   |                   |                |             |              |

Mobilmount weight includes illuminator and stand.

## CANDELALUX • LUMINESCENCE MONITOR



This is the latest light meter technology from Germany! The state-of-the-art design incorporates an extremely sensitive lens which allows for quick and accurate readings from the easy to read digital display. This light meter reads in nits (cd/m<sup>2</sup>) with the lens in place. Remove the lens and the light paddle reads ambient light in lux.

Model 40600

## BRITESPOT ILLUMINATORS

Our standard Britespot features a modern design with a high intensity bulb in a free standing adjustable base. Wall mounted models are also available. Both models include a foot operated on/off switch for ease of operation.

The Iris equipped Britespot features a viewing area that can be easily adjusted from between 1/4 inch to 4 inches. This makes these models ideal for viewing spot films, mammographs and other small format films.



Desk Mounted

## DELUXE IRIS BRITESPOT

High Intensity Britespot Illuminator

Model 126008

This unit offers twice the dynamic range as our regular units, reaching up to 52,000 cd/m<sup>2</sup>. It has a variable light control and an iris opening as standard features. A side - mounting bar (shown here) can be specially ordered.



## AMS MAGNIFYING LENSES

AMS Magnifying Lenses are hand crafted in Germany and offer the highest quality optics. The popular 107002 (2x) allows for films to be viewed using both eyes. Our economical 107006 (6X) is light in weight and is shown with an optional mounting chain and bracket. (Model available for any magnifier). The powerful 107012 (12X) features a new design that eliminates traditional "edge distortion" commonly found in lesser quality single-element lenses.



107000  
Mounting bracket  
with 5 ft. chain

UL Listing File #E-21343  
CSA Certification File #LR-62395  
U.S. Patent #4,691,267



# AMERICAN MEDICAL SALES, INC.

# AMS®

Manufacturers of Medical Equipment and Accessories

4928 West Rosecrans Avenue  
Hawthorne, California 90250-6616

Toll Free: 800-423-3535  
Phone: 310-219-3200  
Fax: 310-219-3201

E-mail: [xray@ams4illuminators.com](mailto:xray@ams4illuminators.com)

website: [ams4illuminators.com](http://ams4illuminators.com)

| STANDARD                                   | Model 300FT                                    | Model 300WM                                    |  |
|--|--|--|--|
|  | Free-Standing                                  | Wall-Mount                                     |  |
| Switch Type                                | Foot   | Foot   | Foot   |
| Light Source                               | 75-watt incandescent                           | 75-watt incandescent                           | 75-watt incandescent                                 |
| Light Intensity (nits)(cd/m <sup>2</sup> ) | 22,000   | 22,000   | 22,000   |
| Electrical                                 | 120 Volt                                       | 120 Volt                                       | 120 Volt   |
| Dimensions                                 | 10" h x 7" d x 4 1/2" w<br>(25.4x17.8x11.4 cm) | 10" h x 7" d x 4 1/2" w<br>(25.4x17.8x11.4 cm) | 10" h x 7" d x 4 1/2" w<br>(25.4x17.8x11.4 cm)       |
| Approx. Ship. Weight                       | 10.0 lbs (4.5 kg)                              | 10.0 lbs (4.5 kg)                              | 10.0 lbs (4.5 kg)                                    |
| IRIS EQUIPPED                              | Model 30355                                    | Model 30352                                    | Model 126008   |
|  | Free-Standing                                  | Wall-Mount                                     | Free-Standing*                                       |
| Switch Type                                | Foot   | Foot   | Rotary (45 sec.)                                     |
| Iris Opening                               | 1/4" to 4"                                     | 1/4" to 4"                                     | 1/4" to 5"   |
| Light Source                               | 75-watt incandescent                           | 75-watt incandescent                           | 250-watt halogen                                     |
| Light Intensity (nits)(cd/m <sup>2</sup> ) | 22,000   | 22,000   | 52,000   |
| Electrical                                 | 120 Volt                                       | 120 Volt                                       | 110 Volt   |
| Dimensions                                 | 10" h x 7" d x 4 1/2" w<br>(25.4x17.8x11.4 cm) | 10" h x 7" d x 4 1/2" w<br>(25.4x17.8x11.4 cm) | 8 7/8" h x 3 1/4" d x 8 7/8" w<br>(22.5x8.2x22.5 cm) |
| Approx. Ship. Weight                       | 10.0 lbs (4.5 kg)                              | 10.0 lbs (4.5 kg)                              | 7.0 lbs (3.2 kg)                                     |

\*For wall mount, order special bracket (201044).

## YOUR LOCAL DEALER:

### OTHER AMS PRODUCT BROCHURES AVAILABLE:

- 200Plus Illuminators
- Darkroom Accessories
- Stackables Filing System
- Cassette & Grid Products
- Imaging Accessory Guides
- Mammography Products & Accessories
- Radiation Protection Garments/Products
- Motorized Viewers
- Quality Assurance