



KONICA MINOLTA

DRYPRO 751/752

DRYPRO 751/752

Centralized Imaging



The essentials of imaging

DRYPRO

MODEL 752

Centralized Imaging

The Konica Minolta DRYPRO 751 and 752 are high performance lasers that offer superior image quality and enhanced network performance.

Depending on your needs, these units offer a choice of a single supply tray (751) or a dual supply tray (752) to increase workflow efficiency and redundancy. Your first image is processed in a mere 90 seconds. Plus, at processing speeds of 120 films per hour, and 16 DICOM channels, the DRYPRO 751 and 752 can meet the demands of the busiest department.

These user friendly, DICOM compliant, network printers host the latest advances in Konica Minolta technology:

- A transport system where all film paths can be viewed from the front surface of the main body, minimizing downtime.
- An LCD touch control panel with stand-by functions.
- Newly developed auto density control functions that enhance output image stability.

All this is delivered in an affordable package that will meet and exceed your needs for years to come.

New Age Networking

Printlink II print management system can convert image signal output from various non-DICOM modalities to image data that complies with the worldwide DICOM standard. Up to 8 units of DICOM-compatible print or 1 unit storage device can be connected to our Printlink II as output destinations, making backup system set-up easy.

“Auto Character Recognition Function” captures patient data such as name, ID, etc. from non-DICOM images, and transfers it to DICOM servers and viewers in the DICOM (Storage Service Class) form.



User-friendly operator control panel.



Film supply tray supports 11"x 14", 14"x 14" and 14"x 17" film sizes.



Easy access doors.



Optional Printlink II DICOM print/store manager.

Image Quality You Can Trust

The Konica Minolta family of DRYPRO Laser Imagers offers even the most critical clinician the best of all laser imaging technologies. Our precision laser-optics, superior digital image processing, and industry-proven SD-P Dry Image Film combine to compliment your diagnostic expertise and training with the best possible images.

Superior Image Quality/High Output

The DRYPRO 751/752 yields 14 Bit density resolution. For the facility, this means more diagnostic information makes it onto the film. Coupled with an output of 120 films per hour, your site will be able to deliver superior images and extremely high output.

Centralized Imaging

Your busy department needs efficiency and redundancy. Sixteen direct connection DICOM channels ensures that no matter the modality, the image will be processed when you need it and available with a minimum amount of queue time. High output and high quality, the hallmarks of the modern clinical facility.

High Volume Sorter

With the optional Konica Minolta LiS-752 Sorter, your DRYPRO 751 and 752 become even more user friendly. The DRYPRO Sorter accepts images from multiple users and modalities and automatically distributes these images into pre-assigned bins. This translates into more efficient use of department personnel, improved productivity and greater revenue realization.

Designed with 5-bin distribution, the Konica Minolta Sorter is essential for optimizing workflow in any radiology department. Advanced software allows the user to define and alter the targeted bin for each and every printed sheet of film. The DRYPRO Sorter handles 14" x 17", 14" x 14" and 11" x 14" film sizes. It has a film load capacity of 50 sheets per bin and attaches directly to the DRYPRO 751 and 752 with no additional power sources necessary.



Direct Connect to DICOM Network

The DRYPRO 751 and 752 offer enhanced network performance by connecting directly to a DICOM network. This direct connectivity eliminates the need for additional, costly network interface devices.

In addition to the basic conventional DICOM print function, the DRYPRO 751 and 752 also support the advanced DICOM print verification and Presentation LUT Service

Class. This ensures that the print densities are equivalent to those on the modality console display.

Moreover, with Requested Image Size of the DICOM print function supported, the laser's high-definition film plane-transport and laser scanning technology provide an actual size image especially for CR/DR modalities.

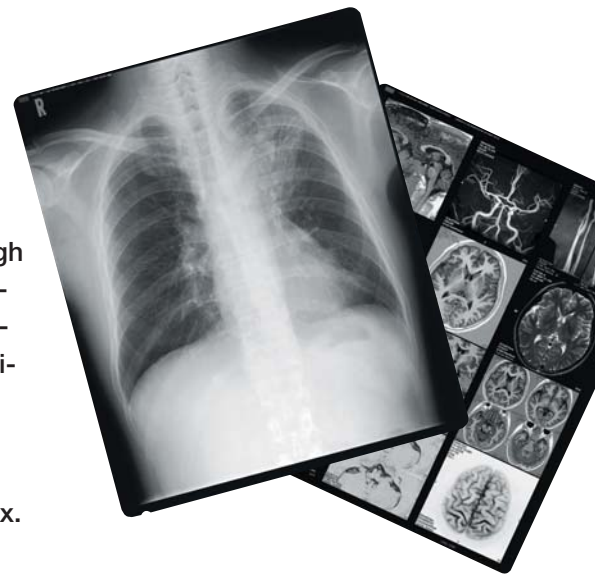


KONICA MINOLTA



Dry Laser Film

Konica Minolta's Silver Dry Process films are designed specially for use with the DRYPRO 751 and 752. Halation prevention technology uses new materials for sharper, clearer images with high maximum density and optimized contrast characteristics. A new complex micro emulsion consisting of photosensitive silver halide and photosensitive organic silver achieves ideal dry processing. Konica Minolta's dry laser films are available in tinted (SD-P) and clear base (SD-PC). The film is daylight-packaged and comes 125 sheets per box.



DRYPRO Model 751/752 Specifications*

Laser Source	Semi-conductor laser
Film Size	14" x 17", 14" x 14", 11" x 14" (Selectable)
Film Type	Konica Minolta Medical Imaging Film SD-P/SD-PC
Image Format	1, 2, 4, 6, 8, 9, 12, 15, 16, 20, 24, 25, 30, 35, 36, 42, 48, 54, 56, 60, 63, 64
Image Memory	Hard Disk (Standard 20 GB) Printer Memory (Standard 256 MB)
Inputs	Maximum 16 DICOM channels
Resolution Matrix (14" x 17")	Maximum 8,850 x 10,650
Pixel Size	Minimum 40µm
Image Data Input	8 bit / 12 bit
Output Gradation	16,384 shades of gray (14 bit)
Processing Capacity	Approx. 120 sheets per hour (14" x 17")
Input Interface	Ethernet 10 base-T/100 base-TX
DICOM Services	DICOM Print Management, GSDF
Supply	2 channel (Model 752) / 1 channel (Model 751)
Calibration	Internal, Automatic
Density Correction	Built-in, Automatic
Usage Environment	Temperature: 59° – 86°F Humidity: 30% – 70% (non-condensing)
Power Source	120V AC / 1080 VA
Heat Generation	Approx. 950 KJ/Hour
Dimensions	29.5"(W) x 27.2"(D) x 55.5"(H)
Weight	616.7lbs (Model 752) 550.7lbs (Model 751)
Accessories	Power cable, operation manual
Comparison of density resolution	16384 levels, 14 bits; 4096 levels, 12 bits
Pixel Interpolation	Replication/Bi-linear/Cubic Spline

* Specifications are subject to change without notice.

Konicare Technical & Professional Service

As a world-class organization, Konica Minolta Medical Imaging provides service and support that is second to none. Our teams of professional service experts are available to you 24 hours a day, seven days a week, to ensure that your business always runs at peak performance. To help meet the specific needs of customers coast to coast, Konica Minolta Medical Imaging has established the Konicare Technical and Professional Services organization.

Konicare consists of people and programs dedicated to optimizing efficiency and productivity within your department. Our professionals are divided into such groups as Application Specialists, Project Managers, Technical Support Specialists and Field Service Representatives. Our programs include Remote Technical Support, Clinical Applications, Project Management, System Integration, System Administration Training and Network/Integration Services.

The Konicare program is designed for maximum flexibility to meet every technological and management need at busy radiology departments. We can customize a program for any facility and any budget, making optimum use of all available resources for the best possible patient care.



KONICA MINOLTA

KONICA MINOLTA MEDICAL IMAGING USA, INC.
411 NEWARK POMPTON TURNPIKE
WAYNE, NJ 07470
TEL: (973) 633-1500 FAX: (973) 523-7408
WEBSITE: medical.konicaminolta.us